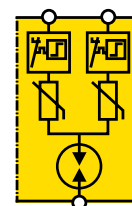
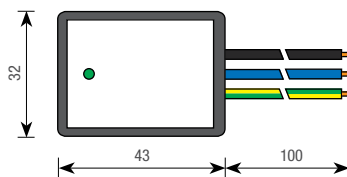
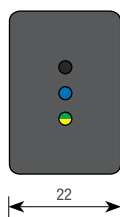
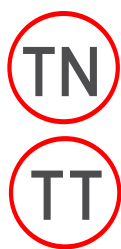
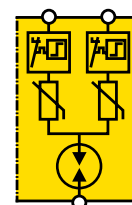
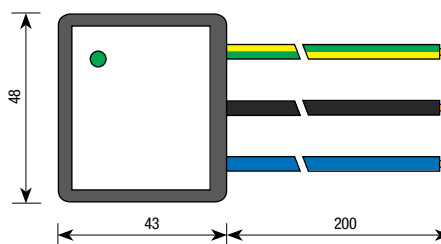




Surge Protective Devices: ZOTUPCOMB



IL 1/3 2P



IL 1/10 2P M

IL 1/3 2P and IL 1/10 2P M are combined voltage limiting and voltage switching SPDs providing three modes of protection, typically installed in single-phase 230 V socket outlets or within equipment with the following features and benefits:

- Impulse test classification IL 1/3 2P: Test Class III according to IEC 61643-11 Ed. 1 (2011-03) and Type 3 according to EN 61643-11 (2012-10);
- Impulse test classification IL 1/10 2P M: Test Class II according to IEC 61643-11 Ed. 1 (2011-03) and Type 2 according to EN 61643-11 (2012-10);
- Equipped with a thermal disconnecter, which interrupts the phase or neutral to ground path in case of an SPD failure, and with a green LED operating state indicator;
- Provided with pigtail connections to enable the IL 1/3 2P to be installed at equipment terminals or e.g. socket outlets, LED power supplies, CCTVs, intruder alarms;
- Suitable for installation at LPZ boundaries 2 – 3 or higher according to the lightning protection zones concept and in coordination with other SPDs.

Model IL ...

Model IL ...		1/3 2P	1/10 2P M
CODE		241 001	241 002
Nominal ac system Voltage	U_n	230 V ac	
Maximum Continuous Operating Voltage	U_c	275 V ac	335 V ac
Test Class according to IEC 61643-11 Ed.1 (2011-03)		III	II
Type according to EN 61643-11 (2012-10)		T3	T2
Max. backup protection with fuse, if not already installed		16 A gG	
Combination wave impulse (1,2/50 μ s, 8/20 μ s)		6 kV / 3 kA	-
Nominal discharge current (8/20 μ s) (L / N- PE)	I_n	-	10 kA
Maximum discharge current (8/20 μ s) (L / N-PE)	I_{max}	-	20 kA
Total discharge current (8/20 μ s) (L + N-PE)	I_{total}	-	20 kA
Voltage protection level at I_n	U_p	$\leq 1,5$ kV (L-N; L / N-PE)	
Response time	t_a	≤ 25 ns (L-N); ≤ 100 ns (L / N-PE)	
End of Life		OCFM (open circuit failure mode)	
Short circuit current rating with max. backup protection with fuse	I_{scrr}	6 kA rms	
Follow current interrupt rating		NFC No Follow Current®	
Behaviour of failure mode in case of Temporary OverVoltage (TOV):	L-N U_T L-PE U_T N-PE U_T	335 V / 5 s, withstand (W); 440 V / 120 min, withstand (W) 1455 V / 200 ms, safe (S) 1200 V / 200 ms, withstand (W)	
Operating temperature range		- 40 ... + 70 °C	
Operating state indicator		green LED	
Connecting wires		1,5 mm ² ; l=100 mm	
Enclosure material		thermoplastic	
Dimensions		l 43 x h 32 x d 22 mm	l 48 x h 43 x d 24 mm
Pollution Degree / Degree of protection	PD / IP	2 / 20	
Approximate weight		30 g	50 g
GTIN (EAN)		8054890320375	8054890320382

TECHNICAL DATA